

# "Ariel"

# \$2,295,000

28 Knapton Hill, Smiths FL08, Bermuda

- ✓ 5 Bedrooms
- ✓ 4 Bathrooms
- ✓ 4,558 sq. ft.
- ✓ 1.07 Acres
- ✓ Pool
- ✓ Marble Floors
- ✓ Cedar Beams
- ✓ Ocean Views



A stately 4 bedroom home plus 5th bedroom (or nanny suite), marries Old World charm of original Bermuda Cedar touches with the modern aura of marble tile and spaciousness.

With renovations completed in the 1990's which include the addition of the family room, master bedroom, kitchen, nanny suite, entrance foyer, garage, swimming pool and deck, this home offers spacious living amenities.

There are 3 bedrooms on the western wing with bathrooms and a master suite on the upper east wing, complete with his/her bathrooms, dressing room and private balcony overlooking magnificent ocean views.

The lanai creates a flow throughout the living areas, complete with wet bar and sliding glass doors offering access to the pool area.

The lower level comprises a 5th bedroom/nanny suite, laundry room, storage rooms and garage.



Judy Shrubb

(44) 704-0404

(441) 292-4990

[judy@decoutore.com](mailto:judy@decoutore.com)



(441) 292-4990 | [www.decoutore.com](http://www.decoutore.com) | [info@decoutore.com](mailto:info@decoutore.com)  
22 Church Street, 4<sup>th</sup> Floor, City of Hamilton HM11, Bermuda



# "Ariel"

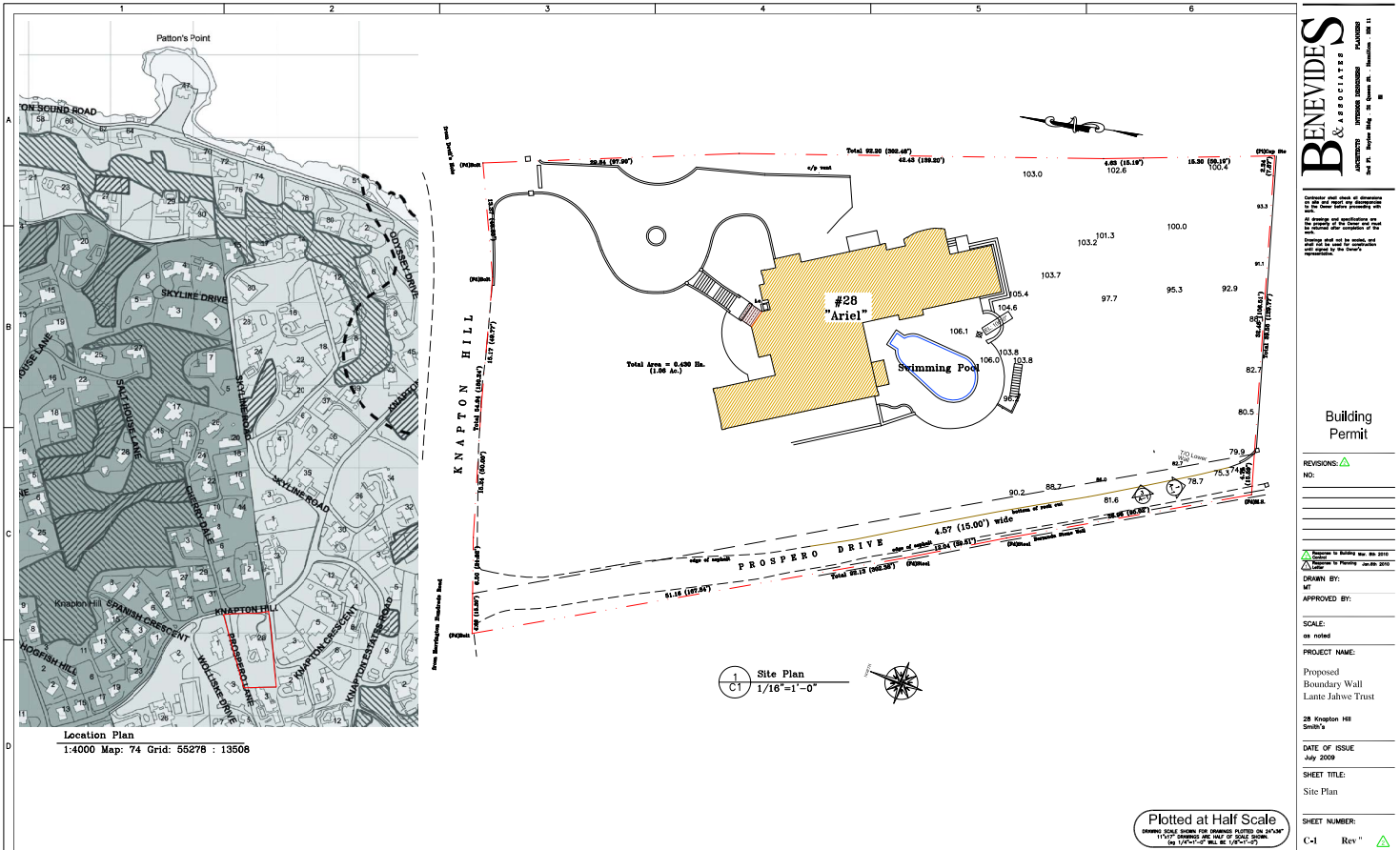
# \$2,295,000

## Additional Info

Foyer 12'6 x 20'  
 Dining 13' x 14'5"  
 Living 23'9 x 15'9"  
 Kitchen 17' x 14'3"  
 Breakfast area 14' x 16'3"  
 Powder room 4' x 6'  
 Coat closet 4' x 6'  
 Sunroom 24' x 10' and 11' x 24'  
 Family room 22' x 22'6"  
 South bathroom 8' x 7'

Master suite 21'9 x 16'5"  
 Ensuite bath 26'6 x 7'6"  
 Closet 10' x 12'  
 Hallway 10' x 4'  
 North bedroom 12' x 14'1"  
 Closet 3' x 5'  
 West bedroom 14' x 10'6"  
 Closet 2' x 4'  
 Bathroom 10'5 x 7'  
 South bedroom 14' x 14'

Ensuite bathroom 9' x 7'6"  
 Closet 2' x 4'  
 Nanny suite 13'9 x 14'2"  
 Kitchenette/closet 14'2 x 8'  
 Lower bath 5' x 7'3"  
 Laundry 17'3 x 12'  
 Garage 13'6 x 16'2  
**Total internal measurements  
 4,558 sq ft. approximately**



**BENEVIDES & ASSOCIATES**  
 ARCHITECTS INTERIOR DESIGNERS PLANNERS  
 28 St. Matthew Rd., St. John's, Bermuda, HM 11

### Building Permit

REVISIONS:

NO: \_\_\_\_\_

DATE: \_\_\_\_\_

DRAWN BY: \_\_\_\_\_

APPROVED BY: \_\_\_\_\_

SCALE: as noted

PROJECT NAME: Proposed Boundary Wall Lante Jaiwe Trust

28 Knapton Hill Smith's

DATE OF ISSUE: July 2009

SHEET TITLE: Site Plan

SHEET NUMBER: C-1 Rev 11



Judy Shrubb  
 (441) 704-0404  
 (441) 292-4990  
 judy@decoutore.com



Assessment Number: 110659015  
 Zoning: Residential 2  
 Land Tax: \$21,456 per annum  
 30,000 Gallon Water Tank

(441) 292-4990 | www.decoutore.com | info@decoutore.com  
 22 Church Street, 4<sup>th</sup> Floor, City of Hamilton HM11, Bermuda